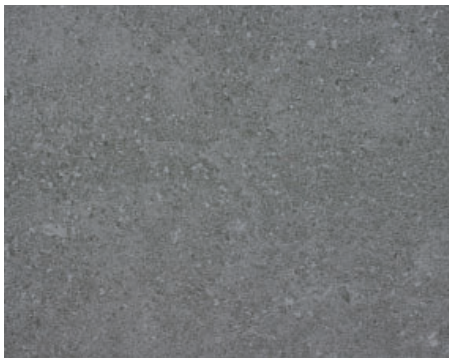


MATERIALIEN

KERAMIK PG1



Zement grau



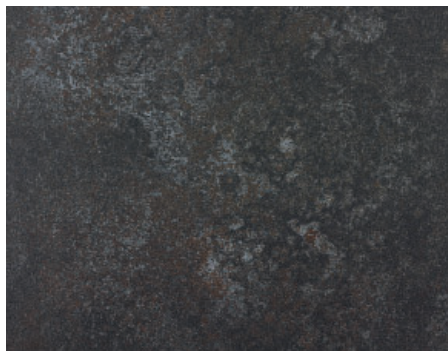
Zement anthrazit



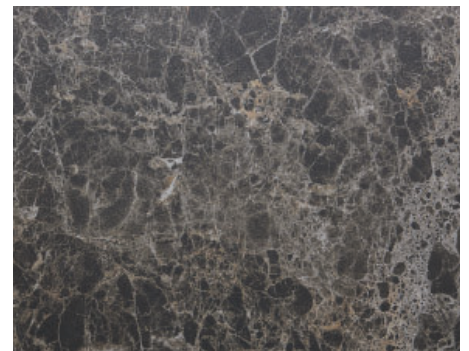
Zement montana



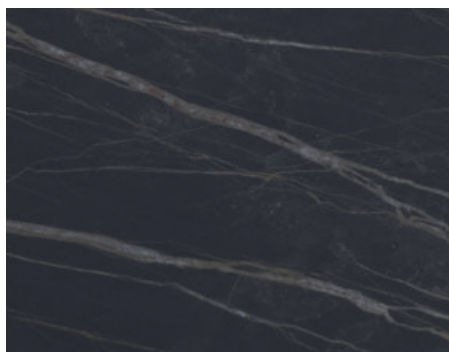
Focus Piombo



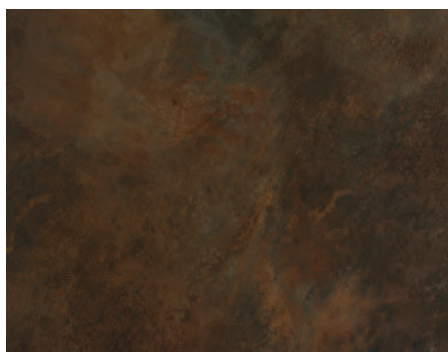
Ossido Nero



Marmor dunkel



Noir Desire



Ossido Bruno



Calacatta

KERAMIK PG2

NEU



Diamond

MATERIALIEN

HOLZ gewachst-geölt oder lackiert



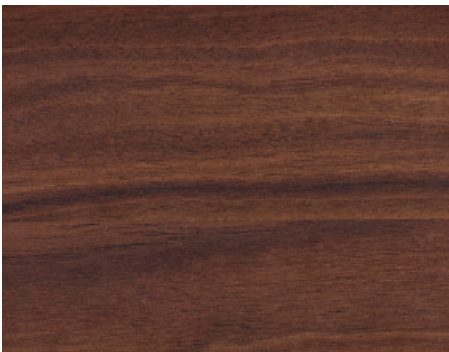
Wildeiche Natur



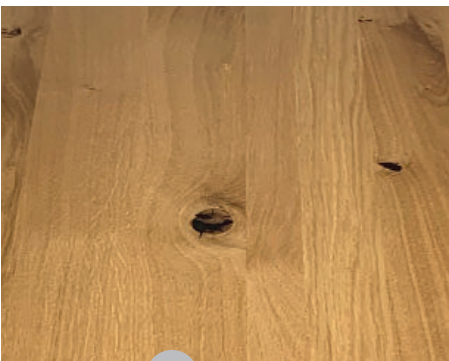
Wildeiche Bianco



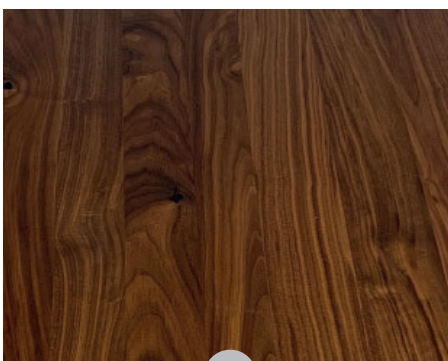
Wildeiche Anthrazit



Nussbaum

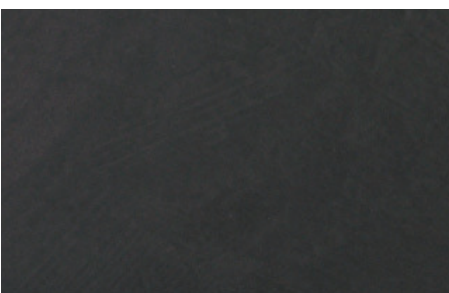


Asteiche fein **NEU**

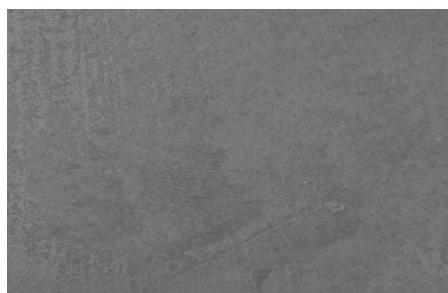


Astnussbaum fein **NEU**

MDF BETONOPTIK



Dark



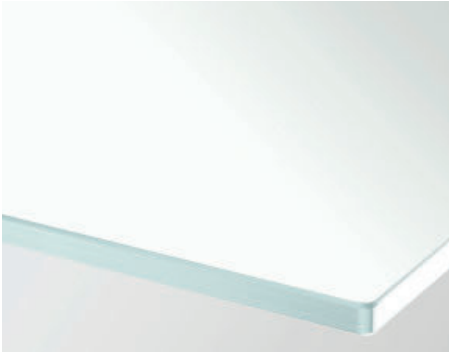
Light

MATERIALIEN

GLAS



Optiwhiteglas (oben)
Floatglas (unten)



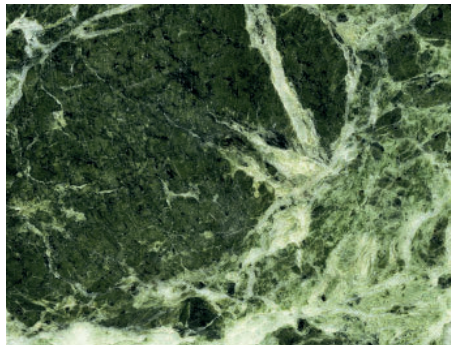
Optiwhite mit Nanostruktur



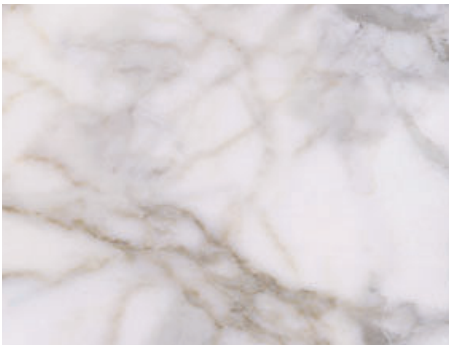
Parsolglas grau

Bitte beachten Sie, dass folgende Farbtöne in Kombination mit Nanostruktur nicht einsetzbar sind:
RAL 9006, RAL 9007, RAL 1035, RAL 1036, RAL 2013, RAL 3032, RAL 3033, RAL 4011, RAL 4012, RAL 5025, RAL 5026, RAL 6035, RAL 6036,
RAL 7048, RAL 8029, RAL 9022, RAL 9023 und edelstahlfarbig.

GLAS MIT DIGITALDRUCK



Guatemala



Calacatta (mit Nanostruktur)

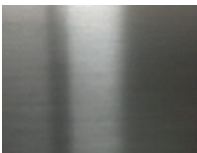


Portoro



Illusion Stone

METALL



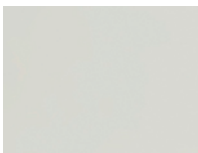
Edelstahl geschliffen



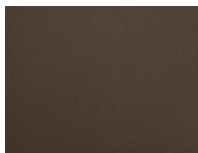
Chrom



Metall schwarz
lackiert o. gepulvert



Metall weiß
lackiert o. gepulvert



Metall bronze
lackiert o. gepulvert